



Gramlich College

100 College Drive, Gramlich, NE 48209 • www.Gramcollege.edu • 800-588-2800

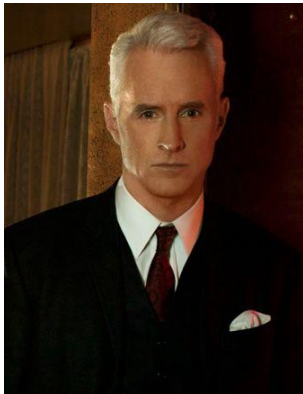
Contact:

Benjamin Renaudin, public relations specialist

(724) 370-0091

Bdr1004@sru.edu

For Immediate Release



KALAMAZOO BORN NHL PLAYER RECOGNIZED BY GRAMLICH COLLEGE IN NEBRASKA

Hometown Hero Honored for Excellence in Hockey

GRAMLICH Neb. (Sept. 23, 2017)—Former Gramlich College and NHL hockey star, Geoffrey Brown, was inducted into the Gramlich College Athletic Hall of Fame on Apr. 28 for his 1973-74 record breaking season.

Selection for these inductions was competitive and only the best were chosen. Brown was selected for this honor because of his record-breaking season that included 30 total goals and a game average of .91. Brown received a framed certificate and had his picture taken which is now displayed in the Gramlich Field House.

“Being inducted into the athletic hall of fame is a dream come true,” Brown said. “It is an honor to be in the same class as many of the outstanding athletes who have come through this college.”

Shortly after his graduation at Gramlich College, the Pittsburgh Penguins drafted Brown. In his later years as a pro, he went on to win two championships with Mario Lemieux. Brown is regarded as one of the best hockey players of his era, and he has used his fame and wealth to benefit Kalamazoo by hosting charity events and donating his own money to the city.

-More-

After his retirement from the NHL, Brown became a high school math teacher and athletic director at Kalamazoo High School.

About Gramlich College:

Gramlich College has an enrollment of more than 1,300 undergraduates. Gramlich College prides itself on diversity due to the large amount of international students. Gramlich College's student body is composed of people from 49 states and 40 foreign countries.

###